

# YOUNG REAL ESTATE

INFO@ALISTAIRYOUNG.COM | 604.533.3491

#52-8555 209 Street,  
Langley, B.C.

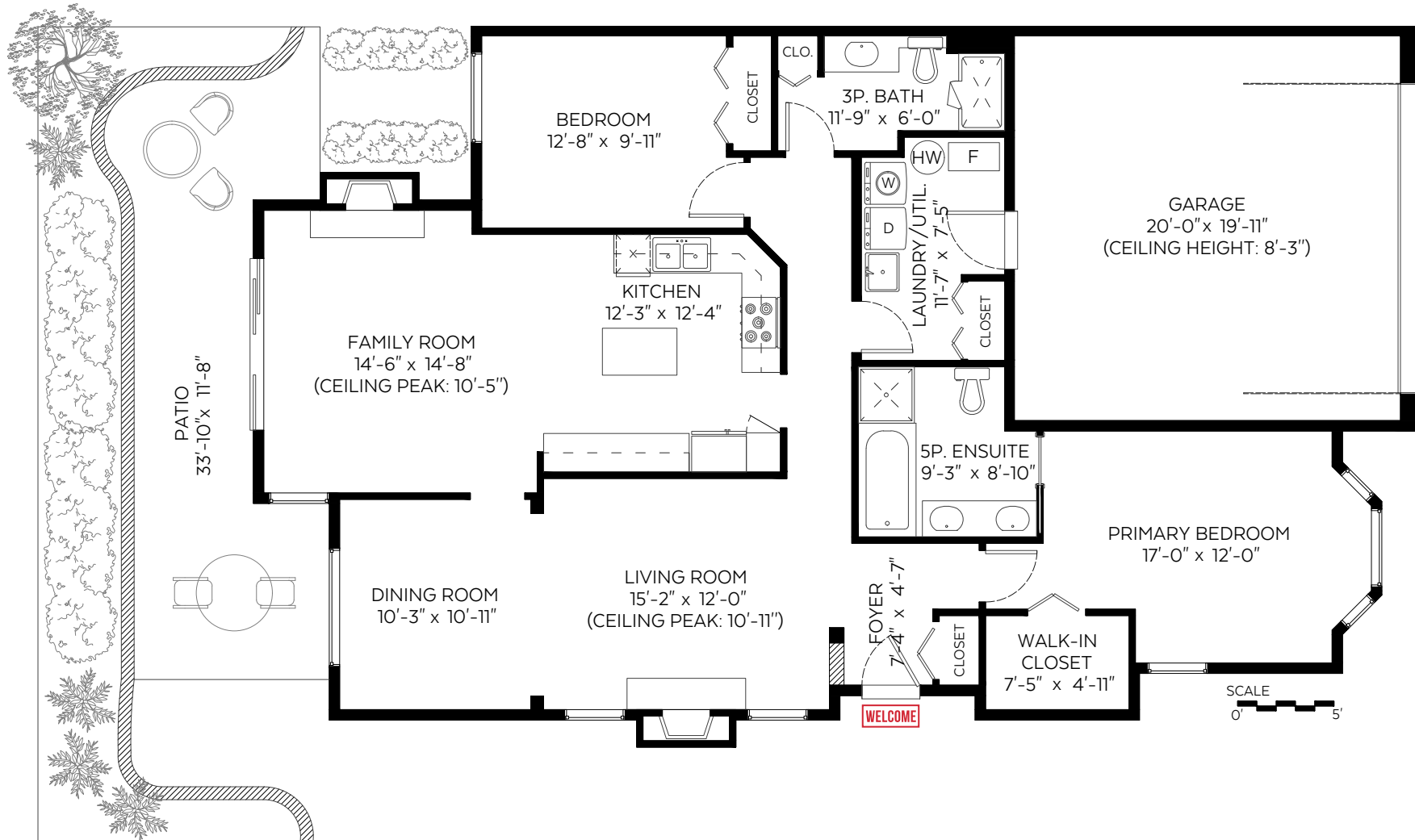
Floor Area: 1,516 sq.ft.

Ceiling Height: 8'-0"

### Auxiliary Area

Garage: 428 sq.ft.

Patio: 315 sq.ft.



Valid Until: September 24, 2025

The floor plan is not suitable for architectural/construction and is covered under E&O. © Excelsior Measuring Inc. 2025. All rights reserved for Excelsior Measuring Inc. Users shall not publish and distribute such material (in whole or in part) and/or incorporate it in other works in any form.



NORTH

