

YOUNG REAL ESTATE

INFO@ALISTAIRYOUNG.COM | 604.533.3491

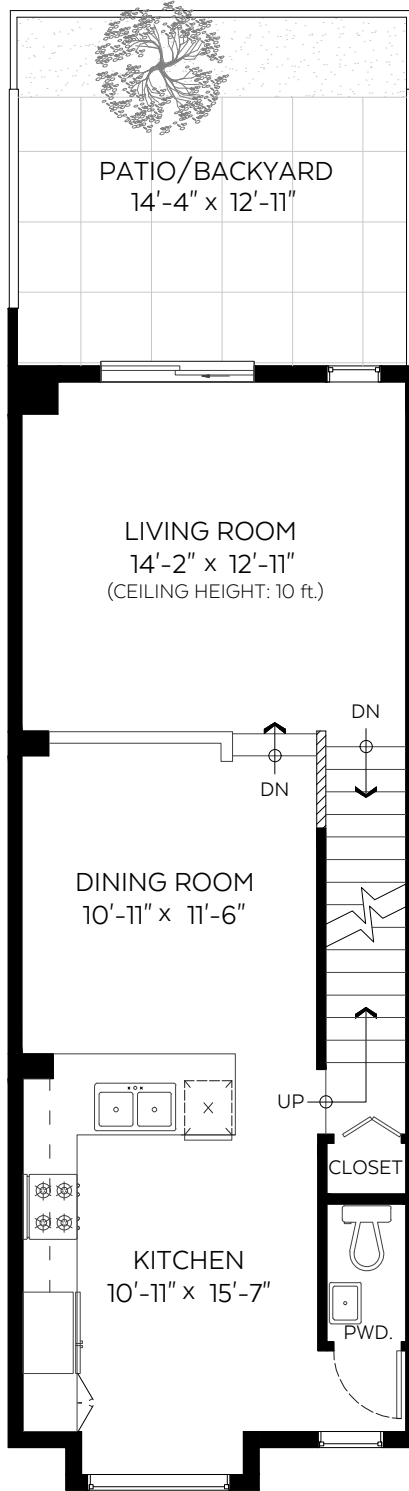
#43-8438 207A Street,
Langley, B.C.

Main Floor: 618 sq.ft.
Upper Floor: 633 sq.ft.
Lower(Entry) Floor: 113 sq.ft.

Total: 1,364 sq.ft.

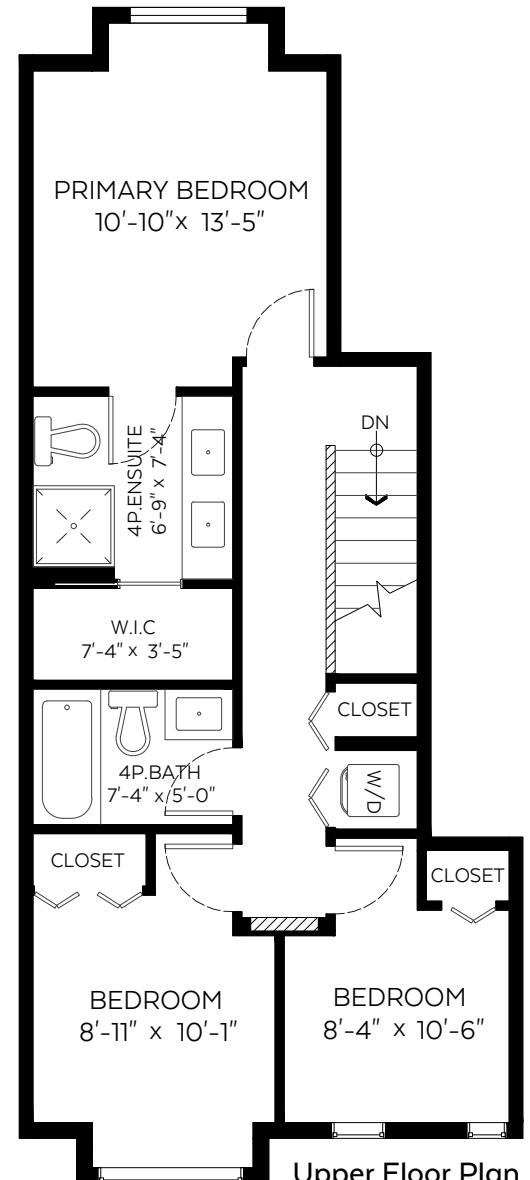
Auxiliary Area

Garage/Storage: 502 sq.ft.
Patio/Backyard: 185 sq.ft.



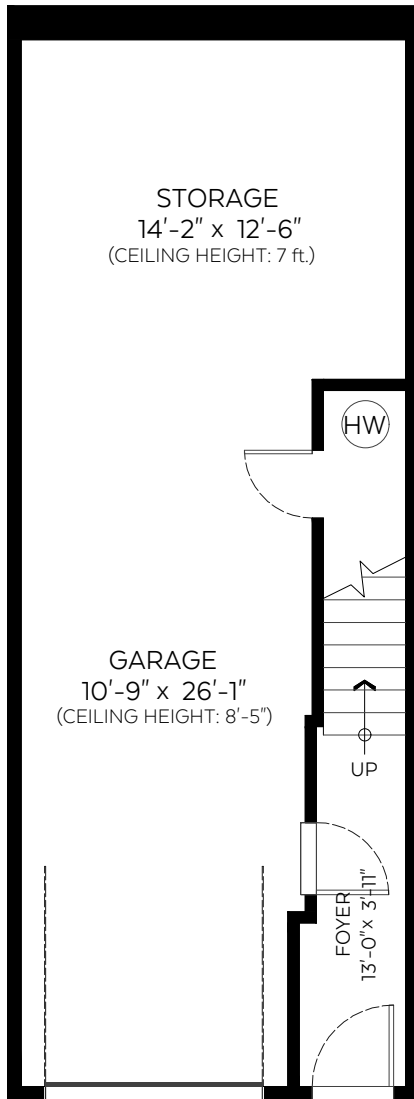
Main Floor Plan

Floor Area: 618 sq.ft.
Ceiling Height: 9 ft.



Upper Floor Plan

Floor Area: 633 sq.ft.
Ceiling Height: 8 ft.



Lower(Entry) Floor Plan

Floor Area: 113 sq.ft.



Valid Until: March 17, 2025

The floor plan is not suitable for architectural/construction and is covered under E&O. © Excelsior Measuring Inc. 2024. All rights reserved for Excelsior Measuring Inc. Users shall not publish and distribute such material (in whole or in part) and/or incorporate it in other works in any form.



NORTH

